

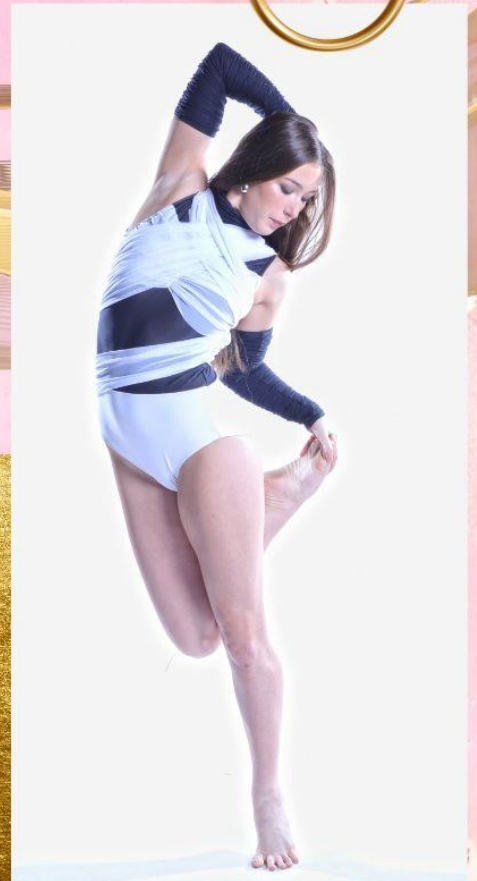
DANCELIFE

U N I T E



SYLLABUS & INFO PACK!

2025



ABOUT US



OUR NATIONAL AMBASSADOR

"I am proud to be the National Ambassador of Australia's DanceLife Unite. I consider DanceLife Unite to be a unique Dance Competition that centres around giving kids an opportunity to hone their performance skills, nurturing their self-esteem and furthering their dance education. It is a warm environment where they are exposed to Industry professionals and encouraged to have FUN!"

DANCELIFE UNITE is Australia's LARGEST & MOST PRESTIGIOUS NATIONAL Troupe competition! Due to strong demand DLU also offers incredible opportunities and prizes for ELITE-LEVEL & UPCOMING SOLOISTS. DanceLife Unite live events are adjudicated by industry-professionals with extensive experience.

PRIZES DLU has EXCEPTIONAL PRIZE POOL including massive Dance Scholarships, Cash, Training Opportunities, Dancewear, Sponsored Dance Products, International Travel and Training, Mentoring and much, more!

ONLINE EVENTS – DLU was the first National Competition to offer Online Events. All acts can compete in ONLINE HEATS with video from a previous stage performance or studio-recorded piece. Performers are critiqued by our industry professionals and results & awards are emailed to competitors with potential National qualification.

TROUPES - DLU caters for dance groups of all ages, sizes, and genres. Qualification is necessary for Troupes to compete at Finals. Each studio or school can enter a maximum of two routines in each category with over 100 sections to choose from. ***NEW** in selected popular LARGE troupe sections we are now allowing 3x entries.

INFANTS, PRIMARY & HIGH SCHOOLS - School Dance groups can enter and compete in their own troupe sections at DanceLife Unite OR in regular troupe sections. **Infants School** (K-2) can enter an open-style section of any genre. **Primary School** Dance Groups (YR3-6) can enter Jazz, Hip Hop or Any Style. **High School Dance Groups** can enter Lyrical, Contemporary, Jazz, Hip Hop and an 'Any Style' section which is now separated into Junior High School (YR 7-9) and Senior High School (YR 10-12) categories.

SOLOS, DUO/TRIOS, PROTÉGÉ – DLU now offers TWO LEVELS of Solos and Championships for individual dancers – CELEBRITY (for Elite/Open level dancers) and APPRENTICE (for Novice/Restricted level dancers). Australia is renowned across the globe for having some of the best, well-trained dancers in the world! **At Live events**, soloists compete for trophies, mega-medals, ribbons & sponsored major awards. **Soloists** may enter as many categories within their age group as desired but only once per section. Multiple heats can be entered if you have a new routine you would like to have critiqued by our professional panel of judges or just if you'd like to 'Share the Magic of DLU' more than once. **Duos & Trios** may enter as many times as desired in Online Heats; up to twice in a Live Regional Event, but can only enter once with the same partner for Finals. If a duo or trio member is also a member of a different duo/trio act they can now also compete at

Finals with a different partner but only once with that partner. Dancers are invited to join us at Finals and compete with our nation's best for incredible prizes at CELEBRITY LEVEL and now also at APPRENTICE LEVEL. Rising Star unqualified acts are invited to compete at Apprentice Level at Nationals & qualified Celebrity Protégé dancers can enter as many acts at Nationals as desired!

MODELS – BLOCH AUSTRALIA are our new sponsors for this fun, professional program that teaches young dancers another 'edge' to their performing skills in the world of modelling for a major dancewear brand. Dancers who qualify at any DLU heat (live or online) are eligible to enter the DLU 'FACE OF BLOCH' DANCE-MODEL SEARCH' at Nationals. The four chosen winners will receive a contract to feature in advertising for BLOCH AUSTRALIA and DanceLife Unite through the following season together with a professional photo shoot, Cash & other prizes! Entrants must not be contracted to other brands past the date of the contract for this opportunity.

FINALS QUALIFICATION - All TROUPE and CELEBRITY SOLO acts that compete and qualify with **80 points or above** in their relevant categories at either our Live Regional Events or Online Heats are eligible to compete at **DanceLife Unite Finals**.

APPRENTICE SOLO acts that receive **75 points or above** in heats are eligible to compete at DLU Finals in APPRENTICE categories. **RISING STAR solo section is offered only at National Apprentice level and is for acts that did not qualify i.e. either a new routine, or one that did not reach 75 points required to qualify. PROTÉGÉ DANCERS cannot compete in RISING STAR. DanceLife Unite is now offering the opportunity for OTHER DANCE COMPETITIONS to partner with us by becoming a 'qualifier' event in regions where we do not currently run a 'DanceLife Unite' flagship event. Dancers at non-DLU Qualifiers must place 1st, 2nd, 3rd, 4th or HC in their sections to qualify to compete at DLU Nationals in either CELEBRITY (Open/Elite) or APPRENTICE (Novice/Restricted/Specially Restricted) levels.**

NATIONAL FINALS & GRAND FINALS 2025 SEASON:

TROUPES – NSW SEPT/OCT SCHOOL HOLIDAYS
Sept 28, 29, 30, Oct 1 – 2025

SOLOS/DUOS/TRIOS & 'FACE OF BLOCH'
January 2026 @ THE GOVERNOR'S CENTRE

VIDEO & PHOTOGRAPHY – No personal Video or Photography is allowed at our events except of Award Ceremonies.

REFUND POLICY – If a competitor is unable to compete at an event due to returning a positive PCR test for COVID-19, DLU will credit the entry to a future event with a \$35 fee to cover administration costs. A copy of the PCR test must be provided for this purpose. Once a DLU event is entered, work begins on processing the entries and creating the event. Therefore, we do not offer refunds. If DLU cannot proceed with a scheduled event due to a government or venue directive, entries will be rolled over to the next available event of similar nature that can go ahead. **PLEASE ENSURE YOU UNDERSTAND AND ACCEPT ALL TERMS AND CONDITIONS PRIOR TO PARTICIPATION.**

NATIONAL DIRECTOR

"Like many of you, I have spent my whole life consumed by DANCE ... as a student from a very young age to a teacher, choreographer, and studio owner ... then as an agent, publisher and event manager dedicated to providing as many opportunities as possible for the next generation of dancers to learn, grow and become incredible future professionals. I am honoured to share your passion and your journey!"





CATEGORY DESCRIPTIONS – TROUPES, SOLOS, DUO/TRIO, DANCE MODELLING

BALLET – Classical, Neo-classical & Repertoire allowed. Pointe work allowed from 12yrs sections.

DEMI-CHARACTER – Classical technique used for telling a story which is character-based. Available for Solos only.

LYRICAL – Expressive, yet subtle, dynamic technical dance focussed on conveying musicality & emotion.

TRADITIONAL CONTEMPORARY – Creative dance; can be abstract, not reliant on narrative, technically based, unpredictable, dynamic.

COMMERCIAL CONTEMPORARY – Fusion of any style, music & narrative driven, generally to commercial soundtrack.

JAZZ – Traditional or commercial styles of up-tempo high energy Jazz.

TAP – Any style of Slow, Waltz, Ensemble, Straight or Speed Tap accepted; no backing tap sounds allowed.

HIP HOP – Street dance styles primarily performed to hip-hop music or evolved as part of hip-hop culture.

SHOWDANCE – Any style of show dance as would be seen in a stage show that is not character-focussed. Example Fosse-style, Showgirl, Broadway.

MUSICAL THEATRE – Routine featuring any style of dance portraying a Musical Theatre characterisation from a Broadway, Movie or TV Show.

SONG & DANCE - Song & Dance of any style with fair display of both singing and dance talents. Vocals CAN be pre-recorded for this section for TROUPES but NOT FOR SOLOS.

ACRO-DANCE – Must have a strong dance element together with acrobatic tricks. No limit to the amount of acro tricks included.

ANY STYLE (OPEN) – Any style of dance – no restriction of genre. No Vocal-only entries allowed. Song & Dance accepted.

STUDENT CHOREY – 100% choreographed by the dancer, no assistance (Solos only)

NEWCOMER – Any style for dancers in their first year of solo competition. Only available at APPRENTICE LEVEL.

APPRENTICE LEVEL SOLO – for dancers of NOVICE/RESTRICTED level who have NEVER won a NOVICE/RESTRICTED Level at **any** previous competition – *either DLU or any other competition* - in any age group for the genre in which they are competing. Once a Novice/Restricted/Apprentice level dancer achieves FIRST PLACE in that genre, whether in a different age group, different competition or with a different routine, they must move to CELEBRITY (Open/Elite) level with the exception of when a dancer wins another competition AFTER ENTRIES FOR THE RELEVANT DLU COMPETITION THEY HAVE ENTERED HAS CLOSED.

APPRENTICE LEVEL CHAMPIONSHIP - Dancers may compete in an Apprentice Championship only with routines that are at the Apprentice (Novice) level and dancers ARE ALLOWED TO REPEAT a routine in the APPRENTICE CHAMPIONSHIP from their APPRENTICE SOLO SECTIONS. Dancers may not compete in an Apprentice Championship with a routine or in a genre in which they are considered a Celebrity (Elite) level dancer. Dancers who enter CELEBRITY CHAMPIONSHIPS (PROTÉGÉ) are NOT ELIGIBLE to compete for APPRENTICE CHAMPIONSHIPS.

CELEBRITY LEVEL – for dancers of OPEN/ELITE STANDARD.

HIGH SCHOOL SOLO - This can be a self-choreographed piece for the purpose of School Dance assessment across Years 10-12 however MUST be limited to 3min time limit maximum. This is not an Education

Dept activity, and the judging does not indicate how the student will be assessed during the Year 12 Dance practical examination.

CELEBRITY PROTÉGÉ CHAMPIONSHIP – Any style of dance for Solos. Must qualify in 3x CELEBRITY sections to be eligible to compete in Protégé at either Regionals or National Finals. Protégé Routine MUST be a different routine except for MINI & PETITE age groups (can be a repeat for 8&U age groups only). Must compete in Protégé at Heats to qualify to compete at National Finals in Protégé.

APPRENTICE CHAMPIONSHIP – Any style of dance for Solos. Must qualify in 3x APPRENTICE sections to be eligible to compete in APPRENTICE CHAMPIONSHIP at either Regionals or National Finals. Routine CAN BE A REPEAT for APPRENTICE CHAMPIONSHIP in all age groups. Dancers of Apprentice Level do not need to have competed in a championship in heats to qualify to compete in APPRENTICE CHAMPIONSHIP at Nationals.

DUO/TRIO – Any style of dance. Dancers may enter multiple duo or trio acts for heats however only ONCE for Finals with the same partner.

IMPROVISATION – Only available at Finals in various genres. Does not count towards Protégé qualifying routines. No qualification required to enter at Nationals.

RIISING STAR – Only available at Finals for unqualified acts in Apprentice Level. Up to 2 routines of any style allowed for each dancer.

DLU NATIONAL 'FACE OF BLOCH' DANCE-MODEL SEARCH – Modelling competition for Dancers for the chance to win a contract to represent BLOCH AUSTRALIA Dance wear brand and DLU for a 12-month contract.

TITLE AWARDS @ REGIONALS & NATIONAL FINALS - TITLE NOMINATION is separately judged only among dancers who have nominated for titles. Dancers do not need to perform an additional routine to nominate for consideration of a Title Award. ***NEW** Dancers may nominate for as many titles as they like on the solo sections they enter, however it is now their **highest scoring routine of those nominated for Titles**, which will be considered for the overall Title Placings at the end of their age group's session/s of performances. **Title finalists** will be announced for each age group at the relevant Award Ceremony (end of session). **A Top FIVE or Top THREE set of dancers** (dependant on number of dancers who nominate for titles in that age group) will then be announced in random order based on their best Title routine score. **The overall HIGHEST POINTSCORING TITLE NOMINEE will then be announced as the REGIONAL TITLE WINNER for their age group.**

SMALL TROUPE – Groups of 4-11 dancers. TWO routines per section allowed.

REGULAR TROUPE – Groups of minimum 4 dancers to any maximum to Studio Director's discretion regarding safety for stage size. TWO routines per section allowed EXCEPT Teen, Senior & Open Age Lyrical, Contemporary & Jazz where a THIRD routine can now be entered for an additional fee.

PRODUCTION TROUPE – Any maximum of dancers based on Studio Director's discretion regarding safety for stage size. TIME LIMIT is up to 5mins duration. TWO routines per section allowed.

PRO-AM / TEACHER FEATURE – Combined Professionals & Amateurs OR all pro dancers i.e. dance teachers, directors, pro dancers, choreographers, companies, Full Time troupes of Cert IV or above. Open Age Troupes of any kind may also compete in this level with additional routines. TWO routines per section allowed.

DANCE-ABILITY - any age special needs dancers. Available for groups only (not solos or duo/trios).

INFANTS SCHOOL DANCE GROUP – for Pre-Primary school age groups (K-2) or state equivalent (e.g. K-3 in QLD).

PRIMARY SCHOOL DANCE GROUP – (YR3-6) Routine taught as part of Education Dept approved activity. TWO routines per section allowed.

HIGH SCHOOL DANCE GROUP – (7-12) Routine taught as part of Education Dept approved activity. TWO routines per section allowed.



TROUPES 2025

ENTRY FEES (PER TROUPE) – HEATS & NATIONAL FINALS

(2025 prices apply)

- LIVE HEATS: \$60+gst – Small & Large Troupes
- LIVE HEATS: \$65+gst – Production Troupe
- ONLINE HEATS: \$50+gst – Small & Large Troupes
- ONLINE HEATS: \$55+gst – Production Troupe
- NATIONAL FINALS: \$75+gst – Small & Large
- NATIONAL FINALS: \$80+gst – Production Troupe
- PROGRAMMING/ADMIN FEE – All Events \$15
- DANCER REGO – NATIONALS ONLY - \$65-\$85+gst
- DANCER AUDIENCE PASS DANCER AUDIENCE PASS @
- REGIONAL LIVE EVENTS – *not mandatory but recommended for dancers to watch - \$10 only.

TROUPE LIMIT PER SECTION:

Until this season, TROUPES have been allowed to enter 2x routines per section. However, due to popular demand, if a 3rd routine is required in the popular genres of LYRICAL, CONTEMPORARY or JAZZ, in TEEN, SENIOR, or OPEN AGE LARGE TROUPE sections, we are allowing this option with a \$35 surcharge for the additional item (i.e. \$95+gst for a 3rd routine in same section). Please note, it is preferred, for the purpose of keeping the schedule on time, that dancers only perform a maximum of twice in a section to avoid costume changing delays. Other options for additional items are the 'ANY STYLE', 'PRODUCTION', and 'PRO-AM/TEACHER FEATURE' Sections. SMALL TROUPES, and SCHOOL DANCE TROUPES that wish to do additional items can also enter the LARGE TROUPE regular sections.

TIME LIMITS (maximum):

- SMALL, LARGE & SCHOOL DANCE TROUPES: 4 mins
- PRODUCTION TROUPES: 5 mins
- TROUPE CHAMPIONSHIPS @ FINALS: 5 mins max

PENALTY FOR OVERTIME ACTS:

- 10 seconds overtime – Judge's discretion warning
- 15 seconds overtime – 0.5-point deduction
- 20 seconds overtime – 1-point deduction
- 30 seconds overtime – 2-point deduction
- 40 seconds overtime – 3-point deduction
- 50 seconds overtime – 4-point deduction
- 60 seconds overtime – 5-point deduction

AGE AS AT: **1ST JANUARY 2025** (not average age)

AGE GROUPS:

- MINIS (6&U)
- PETITES (8&U)
- JUNIORS (10&U)
- PRE-TEENS (12&U)
- TEENS (14&U)
- SENIORS (16&U)
- OPEN AGE

TROUPE SECTIONS AVAILABLE @ ALL EVENTS

LARGE TROUPES AVAILABLE @ ALL EVENTS (4mins)

- BALLET
- LYRICAL
- CONTEMPORARY
- JAZZ
- SHOWDANCE
- HIP HOP
- TAP
- MUSICAL THEATRE
- SONG & DANCE
- ACRO DANCE
- ANY STYLE

SPECIALTY TROUPES AVAILABLE @ ALL EVENTS (4mins)

- **PRO-AM/TEACHER FEATURE** (any age includes Cert IV & above, semi & professional dancers)
- **DANCE-ABILITY** (any age special needs dancers)

SMALL TROUPES (4-11 DANCERS) AVAILABLE @ ALL EVENTS (4mins)

- BALLET
- LYRICAL
- CONTEMPORARY
- JAZZ
- SHOWDANCE
- HIP HOP
- TAP
- MUSICAL THEATRE or SONG & DANCE
- ACRO DANCE
- ANY STYLE

PRODUCTION TROUPES AVAILABLE @ ALL EVENTS (5mins)

- MUSICAL THEATRE or SONG & DANCE
- ANY STYLE

SCHOOL DANCE TROUPES @ ALL EVENTS (4mins)

INFANTS/PRE-PRIMARY (YRS K-2)

- ANY STYLE

PRIMARY SCHOOL (YRS 3-6)

- JAZZ/HIP HOP
- ANY STYLE

HIGH SCHOOL (YRS 7-9)

- LYRICAL
- CONTEMPORARY
- JAZZ
- HIP HOP
- ANY STYLE

HIGH SCHOOL (YRS 10-12)

- LYRICAL
- CONTEMPORARY
- JAZZ
- HIP HOP
- ANY STYLE

HIGH SCHOOL – ALL AGES (YRS 7-12)

- ANY STYLE

TROUPE CHAMPIONSHIPS @ NATIONAL FINALS (5mins)

MAJOR DIVISION 1 – 5yrs to 8yrs – LARGE TROUPES

Includes MINI & PETITE TROUPES

MAJOR DIVISION 2 – 9yrs to 12yrs – LARGE TROUPES

Includes JUNIOR & PRE-TEEN TROUPES

MAJOR DIVISION 3 – 13yrs to 16yrs – LARGE TROUPES

Includes TEEN & SENIOR TROUPES

MAJOR DIVISION 4 – Open Age – LARGE TROUPES

Includes OPEN AGE TROUPES

**Studios entering MAJOR DIVISION TROUPE CHAMPIONSHIPS must qualify by competing in at least 3x Troupes (of any size) in the relevant age group EXCEPT in DIVISION 1 where only 1x qualifying routine is required.*

MINOR DIVISION 1 – 5yrs to 8yrs – SMALL TROUPES

Includes MINI & PETITE SMALL TROUPES (*4-11 Dancers)

MINOR DIVISION 2 – 9yrs to 12yrs – SMALL TROUPES

Includes JUNIOR & PRE-TEEN SMALL TROUPES (*4-11 Dancers)

MINOR DIVISION 3 – 13yrs to 16yrs – SMALL TROUPES

Includes TEEN & SENIOR SMALL TROUPES (*4-11 Dancers)

MINOR DIVISION 4 – Open Age – SMALL TROUPES

Includes OPEN AGE SMALL TROUPES (*4-11 Dancers)

**Studios entering MINOR DIVISION TROUPE CHAMPIONSHIPS must qualify by competing in at least 3x Troupes (of any size) in the relevant age group, EXCEPT in DIVISION 1 where only 1x qualifying routine is required.*

**NB Winners of the HIGHEST POINT SCORE for SCHOOL DANCE TROUPES at Nationals will be invited to perform at GRAND FINAL as special GUEST ACT where PRIZES will be awarded.*



SOLOS, DUO/TRIO, MODELLING 2025

ENTRY FEES (PER ACT) – LIVE HEATS, ONLINE HEATS & NATIONAL FINALS

- LIVE HEATS: \$50+gst – Solos (includes Championships)
- LIVE HEATS: \$20+gst – Title Award Nomination
- LIVE HEATS: \$55+gst – Duo/Trio
- ONLINE HEATS: \$40+gst – Solos
- ONLINE HEATS: \$45+gst – Duo/Trio
- NATIONAL FINALS: \$85+gst – Solos
- NATIONAL FINALS: \$95+gst – Protégé Championship (Celebrity)
- NATIONAL FINALS: \$95+gst – Duo/Trio
- NATIONAL FINALS: \$45+gst – Improvisation
- NATIONAL FINALS: \$25+gst – Title Award Nomination
- NATIONAL FINALS: \$95+gst – 'FACE OF BLOCH' Modelling
- PROGRAMMING/ADMIN FEE – Regional Live Events \$15
- PROGRAMMING/ADMIN FEE – National Events \$20
- DANCER REGO – NATIONALS ONLY - \$75-\$85+gst
- DANCER AUDIENCE PASS @ REGIONAL LIVE EVENTS – *recommended for dancers to watch events - \$10 only.

TIME LIMITS (maximum):

- MINI, PETITE, JUNIOR, PRE-TEEN – 2.5mins
- TEEN, SENIOR, PRE-PRO – 3mins

PENALTY FOR OVERTIME ACTS:

- 10 seconds overtime – Judge's discretion warning
- 15 seconds overtime – 0.5-point deduction
- 20 seconds overtime – 1-point deduction
- 30 seconds overtime – 2-point deduction
- 40 seconds overtime – 3-point deduction
- 50 seconds overtime – 4-point deduction
- 60 seconds overtime – 5-point deduction

AGE AS AT: 1ST JANUARY 2025

AGE GROUPS:

- MINIS (6&U)
- PETITES (8&U)
- JUNIORS (10&U)
- PRE-TEENS (12&U)
- TEENS (14&U)
- SENIORS (16&U)
- PRE-PRO (17&O)

HIGH SCHOOL SOLO ASSESSMENT:

The HIGH SCHOOL SOLO ASSESSMENT section is specifically for dancers studying DANCE at High School who are seeking stage performance experience and professional feedback. This can be a self-choreographed piece for the purpose of School Dance assessment across Years 10-12 however MUST be limited to 3min time limit maximum.

SOLO LEVELS:

This season, we offer **APPRENTICE (Novice/Restricted)** Solos at all DLU Events and continue to also offer **CELEBRITY (Elite/Open)** level Solos. Dancers who compete at CELEBRITY LEVEL must reach 80 points or above to qualify for National Finals, whereas APPRENTICE LEVEL dancers must reach 75 points or above to qualify for National Finals at that level.

SPECIAL NOTES:

- Dancers do not have to compete in the same genre at Nationals as what they qualified in at heats. What is important is the number of routines that are qualified in heats.
- Dancers who compete in Protégé Championships @ Celebrity Level, OR Apprentice Championships @ Apprentice Level in heats can now do unlimited solos in their level @ National Finals.
- Dancers who compete with 3 or less routines in heats, can enter 3x National Finals at their level (Celebrity or Apprentice) plus Improvisations and the Celebrity Rising Star section.
- **Protege Championships must be entered at regional or online heat level to compete in that section at National Finals. Apprentice Championships do not have to be entered at Heats to compete in them at Nationals.**

CELEBRITY SOLO SECTIONS @ LIVE & ONLINE EVENTS

AGE GROUPS: MINI, PETITE, JUNIOR, PRE-TEEN, TEEN, SENIOR, PRE-PRO

- BALLET
- DEMI-CHARACTER
- LYRICAL
- CONTEMPORARY - TRADITIONAL
- COMMERCIAL CONTEMPORARY
- JAZZ
- BROADWAY/SHOWDANCE
- HIP HOP
- TAP
- MUSICAL THEATRE
- SONG & DANCE
- ACRO DANCE
- ANY STYLE
- NEWCOMER (1ST YEAR OF SOLOS)
- STUDENT CHOREOGRAPHY
- CHAMPIONSHIP PROTÉGÉ (***No repeats except MINI & PETITE**)

APPRENTICE SOLO SECTIONS @ LIVE & ONLINE EVENTS

AGE GROUPS: MINI, PETITE, JUNIOR, PRE-TEEN, TEEN, SENIOR

- BALLET
- DEMI-CHARACTER
- LYRICAL
- CONTEMPORARY - TRADITIONAL
- COMMERCIAL CONTEMPORARY
- JAZZ
- BROADWAY/SHOWDANCE
- HIP HOP
- TAP
- MUSICAL THEATRE
- SONG & DANCE
- ACRO DANCE
- ANY STYLE
- NEWCOMER (1ST YEAR OF SOLOS)
- STUDENT CHOREOGRAPHY
- APPRENTICE CHAMPIONSHIP (***Repeats allowed**)

DUO/TRIO SECTIONS @ LIVE & ONLINE EVENTS

AGE GROUPS: MINI, PETITE, JUNIOR, PRE-TEEN, TEEN, SENIOR (15&O)

- ANY STYLE

TITLE AWARDS @ LIVE HEATS & NATIONAL FINALS

AGE GROUPS: MINI, PETITE, JUNIOR, PRE-TEEN, TEEN, SENIOR, PRE-PRO

*'TITLES' are not an extra performed section; it is a nomination for consideration for the TITLE AWARD in relevant category – now offered in the all genres and age categories.

ADDITIONAL SECTIONS @ NATIONAL FINALS

AGE GROUPS: MINI, PETITE, JUNIOR, PRE-TEEN, TEEN, SENIOR, PRE-PRO

- BALLET IMPROVISATION
- LYRICAL IMPROVISATION
- CONTEMPORARY IMPROVISATION
- JAZZ IMPROVISATION
- TAP IMPROVISATION
- 'RISING STAR' (*Apprentice Only*)

'FACE OF BLOCH' MODEL SEARCH @ NATIONAL FINALS

- FACE OF BLOCH: 5-8YRS
- FACE OF BLOCH: 9-12YRS
- FACE OF BLOCH: 13&O

*NB 'Face of Bloch' competitors need to have qualified at a DLU or Non-DLU Qualifying event across the 2025 season, but do not need to enter a solo at Nationals to compete in the Modelling Challenge.

QUALIFYING @ NON-DLU EVENTS FOR NATIONAL FINALS

DLU now offers the opportunity for **OTHER DANCE COMPETITIONS** to partner with us by becoming a 'qualifier' event where we do not currently run a DLU flagship event. For NON-DLU OFFICIAL QUALIFIER events, dancers must place 1ST, 2ND, 3RD, 4TH OR HIGHLY COMMENDED in an OPEN/ELITE section for CELEBRITY LEVEL or in a NOVICE/RESTRICTED/SPECIALLY RESTRICTED section for APPRENTICE LEVEL to qualify to compete at @ DLU NATIONALS.



HOW TO ENTER

LIVE REGIONAL EVENTS – DLU RUN EVENTS

All entries must be completed via our website at www.dancelifeunite.com.au for Troupes, Solos, Duos/Trios.

Payment must be completed via our online registration system - NO EXCEPTIONS. This ensures all entry and contact details are correct and no mistakes or omissions are encountered. PayPal offer a 4-part payment system for those requiring a payment plan on entries. Please CHECK YOUR ENTRIES! Entries will close 4 weeks prior to a scheduled event or when SOLD OUT. Draft Program will be prepared and sent for checking to all participants. Final Digital Program will be sent to all participants approximately 2 weeks prior to events.

ONLINE HEATS – ALL PERFORMANCE ACTS

Entries to Online Events open on the advertised first day of each heat and close on the advertised last day of each heat.

Upload to YouTube a good quality recording of the Solo, Duo/Trio, Troupe or School Dance Group stage performance from the past 12 month or clearly filmed studio performance. Uploading can sometimes take a while so allow plenty of time for this step. Set your YouTube account to 'UNLISTED' - NOT 'Private' - if you would like to keep the clip from being available publicly. Then, copy and paste the YouTube URL into the online entry form complete all entry details and pay relevant entry fees via PayPal or credit card. We have a YouTube tutorial available on the entry page for your convenience. [Contact us if you need assistance with this step: entries@dancelifeunite.com.au or M: 0422 986362]

'FACE OF BLOCH' NATIONAL DANCE-MODEL SEARCH

All dancers who qualify for DANCELIFE UNITE NATIONALS via EITHER a DLU-run event or official 'QUALIFIER' event (run by others) are eligible to enter the DLU NATIONAL 'FACE OF BLOCH' DANCE-MODEL SEARCH at the Solo Nationals in January 2025. To enter the DLU NATIONAL 'FACE OF BLOCH' DANCE-MODEL SEARCH (FOB) at Nationals, you must pay the relevant fee via the entry system and then send via email to entries@dancelifeunite.com.au one good quality headshot and one good quality body-shot with your online entry form for NATIONALS showing where you qualified. Complete all entry details and pay the relevant entry fees. Contestants are judged on photogenic, catwalk & choreography qualities by our panel of expert judges and BLOCH AUSTRALIA.

TO QUALIFY FOR NATIONAL FINALS AT DLU-RUN HEATS

All TROUPE and CELEBRITY SOLO acts that score 80 points or above at one of our DLU Regional Live Events or Online Heats may compete for Major Prizes at Finals in CELEBRITY LEVEL. Acts that score under 80 points at a DLU heat may compete in Rising Star sections in CELEBRITY LEVEL for Finals Trophies or in our APPRENTICE LEVEL competition at NATIONALS. Dancers in APPRENTICE solo levels must reach 75 points or above to qualify to compete at NATIONALS.

DANCERS wishing to compete for SOLO NATIONAL PROTÉGÉ TITLES must qualify by competing at least 3x solo routines at NATIONALS in CELEBRITY FINALS sections (does not include improvisation) PLUS compete in the PROTÉGÉ NATIONAL FINAL. Dancers of APPRENTICE level need to qualify and compete in 3x routines to compete for APPRENTICE CHAMPIONSHIP at Nationals however do not need to have done a Championship at Heats to be able to compete in APPRENTICE CHAMPIONSHIP at Nationals.

TO QUALIFY FOR DLU NATIONAL FINALS AT 'QUALIFIERS' (NON-DLU EVENTS RUN BY OTHERS)

All acts that place 1st, 2nd, 3rd, 4TH OR HC in Solos, Duos/Trios in OPEN or ELITE levels will qualify for DLU SOLO Nationals at CELEBRITY LEVEL. All Solos who compete in Restricted, Specially Restricted or Novice Sections at Qualifiers and place 1st, 2nd, 3rd, 4th or HC will qualify to compete at DLU SOLO Nationals at APPRENTICE LEVEL. All acts that place 1st, 2nd, 3rd, 4TH OR HC in Troupes will qualify for DLU Troupe Finals.

SPECIAL TROUPE BONUS @ NATIONALS

- For every 5 qualified troupes, a studio or school may enter one additional un-qualified BONUS troupe routine.
- Studios that enter and compete with 20 or more routines at a Live or Online Heat can enter an UNLIMITED number of ROUTINES at National Finals.
- Troupe acts entered in Finals do not need to be the same genre or age group as acts qualified in the Regional Heats.

HOW TO ENTER FINALS – ALL EVENTS

Once you have qualified at a Live or Online Heat, you may enter the National Final Events. NB: Competing at a Live or Online Event does not automatically enter you for Finals - it establishes whether you have qualified to compete at Finals.

All entries must be completed via our website: www.dancelifeunite.com.au via the 'NATIONAL FINALS' Entry Page for the relevant event you wish to enter.

Entries close 6 weeks prior to National Finals or when entries are SOLD OUT. Please CHECK YOUR ENTRY!



NATIONAL FINALS

PERFORMERS' WRISTBANDS - ALL EVENTS NOW INCLUDES GRAND FINAL

At DanceLife Unite National Finals, ALL performers must pre-purchase and wear a PERFORMER'S WRISTBAND at all times on their RIGHT WRIST across the entire event. This is covered in a dancer's REGISTRATION FEE. This wristband allows the performer to:

- Perform on stage.
- Be a spectator for the entire event - INCLUDES GRAND FINAL
- Participate in dance workshops by top professionals – (except 8&U unless the workshop option has been purchased by this age group).

NB: Catwalk choreography workshops are for 'DLU NATIONAL 'FACE OF BLOCH' Finalists only.

Where a performer's wristband has been lost, destroyed, stolen, forgotten, or otherwise gone missing, a new wristband MUST BE PURCHASED before the performer will be granted access to PERFORM, SPECTATE or PARTICIPATE in any event at the DanceLife Unite Finals. Loose wristbands will be replaced by our staff. 'Sharing' a wristband will immediately disqualify performers from competition.

FINALS & GRAND FINAL - TROUPES

TROUPE FINALS – Each section of the Finals is judged separately, and competitors receive awards of Finals titles; 1st, 2nd & 3rd trophies plus ribbons for 4th & HC based on scores. First prize for each Troupe Final category also wins up to \$DLU100 Value Prize.

INFANTS, PRIMARY & HIGH SCHOOLS: School dance groups have their own sections at Finals and can compete only in these sections or choose to also compete (with different routine/s) in regular troupe sections against dance studio groups. The Highest point-scoring School Dance Group will be invited to perform at Grand Final as Guest Artists & receive a \$500 cash prize to be presented at Grand Final Awards. School groups that wish to compete for major prizes must enter and compete in the regular troupe sections at National Finals and in the corresponding MAJOR DIVISION in National Troupe Championships.

TROUPE CHAMPIONSHIPS @ NATIONALS

This season we are expanding our TROUPE CHAMPIONSHIP format @ GRAND FINAL to take out the 'guesswork', stress and uncertainty for our valued VIP Studios, Dancers & Parents so that you can come super-prepared and ready to put your 'best feet forward'!!!

HERE'S HOW IT WORKS ...

Just like a Solo Championship, our NATIONAL TROUPE CHAMPIONSHIPS are an ENTERED CATEGORY performed at GRAND FINAL. This means you ENTER the NATIONAL TROUPE CHAMPIONSHIP so that we know you can be available, and both you and our team are able to be as prepared as possible. We now have a 2nd Championship option for SMALL TROUPES – see below:

LARGE TROUPES (5MINS MAX – REPEATS ALLOWED)

MAJOR DIVISION 1 – 5yrs to 8yrs – LARGE TROUPES

Includes MINI & PETITE TROUPES

MAJOR DIVISION 2 – 9yrs to 12yrs – LARGE TROUPES

Includes JUNIOR & PRE-TEEN TROUPES

MAJOR DIVISION 3 – 13yrs to 16yrs – LARGE TROUPES

Includes TEEN & SENIOR TROUPES

MAJOR DIVISION 4 – Open Age – LARGE TROUPES

Includes OPEN AGE TROUPES

**Studios entering MAJOR DIVISION TROUPE CHAMPIONSHIPS must qualify by competing in at least 3x Troupes in the relevant age group, except DIVISION 1 where only 1x Troupe is required to qualify.*

SMALL TROUPES (4 MINS – REPEATS ALLOWED)

MINOR DIVISION 1 – 5yrs to 8yrs – SMALL TROUPES

Includes MINI & PETITE SMALL TROUPES (*4-11 Dancers)

MINOR DIVISION 2 – 9yrs to 12yrs – SMALL TROUPES

Includes JUNIOR & PRE-TEEN SMALL TROUPES (*4-11 Dancers)

MINOR DIVISION 3 – 13yrs to 16yrs – SMALL TROUPES

Includes TEEN & SENIOR SMALL TROUPES (*4-11 Dancers)

MINOR DIVISION 4 – Open Age – SMALL TROUPES

Includes OPEN AGE SMALL TROUPES (*4-11 Dancers)

**Studios entering MINOR DIVISION TROUPE CHAMPIONSHIPS must qualify by competing in at least 3x Troupes in the relevant age group, except DIVISION 1 where only 1x Troupe is required to qualify.*

The NATIONAL TROUPE CHAMPIONSHIP item/s can be either a **NEW routine OR a REPEATED routine**, however music for the Championship item MUST be in the DLU NATIONALS' PLAYLIST prior to the entire Nationals event starting to ensure smooth preparation for the Grand Final.

TROUPE CHAMPIONSHIP items can include PRODUCTION pieces for MAJOR DIVISIONS (TIME LIMIT up to 5 MINUTES), however for MINOR DIVISIONS, time limit remains 4 MINUTES). Each Studio can enter an age DIVISION only ONCE for each of the NATIONAL TROUPE CHAMPIONSHIPS (BOTH MAJOR & MINOR DIVISIONS can be entered where enough routines have been qualified) and you can enter all age DIVISIONS that you have qualified for (i.e. each age division where 3x Troupes have competed across those age groups except DIVISION 1 where only 1x Troupe is required to qualify.)

AWARDS & TITLES up for grabs are:

- DLU TROUPE GRAND CHAMPION – ALL MAJOR DIVISIONS: Cash Award up to \$1,500 (depending on entry levels)
- DLU TROUPE GRAND CHAMPION – ALL MINOR DIVISIONS: Cash Award up to \$500 (depending on entry levels)
- DLU SCHOOL DANCE GRAND CHAMPION – ANY AGE – Cash Award up to \$500 (depending on entry levels)
- CHOREOGRAPHY, TECHNIQUE, ENTERTAINMENT, X-FACTOR, SHOWMANSHIP, PROFESSIONALISM, COSTUME/GROOMING + MORE!!

FINALS & GRAND FINALIST SELECTION - SOLO, DUO/TRIO, PROTEGE, MODELS

Each section of the National Finals is judged separately. GENRE Awards are awarded at Judges' discretion via TITLE AWARD nomination.

'National Protégé Solo Championships' at 'CELEBRITY LEVEL' will be held at Grand Final to compete for major prizes.

'National Apprentice Championships' will be held throughout the program at a conveniently scheduled time for relevant participants.

Duos/Trios – Top scoring Duo/Trio acts in each age group will progress to Grand Final to perform as a Guest Act.

Models - The 'DLU NATIONAL 'FACE OF BLOCH' DANCE-MODEL SEARCH competition is a detailed process combining modelling, photography, and catwalk workshops. Models are chosen from each age category i.e. total number of models is based on entries & will go through to the Grand Final, where 4 winners are announced. After featured performances at Finals, our judges then announce all National Grand Champions and award all prizes!



TERMS & CONDITIONS:

Rules, regulations, and guidelines: Dancelife Unite (DLU) takes pride in being a fair and professional competition. Please read all rules, regulations, and guidelines carefully, making sure that you and/or everyone in your dance studio/group, including parents, understand and accept them. Failure to adhere to these rules and regulations may result in disqualification.

General Entry Conditions - all DLU Events

1. FORCE MAJEUR CLAUSE - no responsibility is taken by DLU, its staff or owners for losses caused by cancellation or postponement of events due to Government restrictions as in the case of Covid-19 Pandemic or other unforeseen situations. Every effort will be made to provide 'in-kind' or alternate services when possible if an event is postponed or cancelled.
2. DLU is a member of the **Australian National Dance Competition Alliance (ANDCA)**. All competitors understand and agree to the ANDCA codes of conduct.
3. **The Directors of DLU reserve the right to determine appropriate action and procedures where necessary if not covered in written Terms, Conditions or advertised information or where rules/circumstances may require clarification.**
4. All participants grant permission for DLU, to use their images/video snippets to promote the event. **No personal Video or Photography is permitted** of performances.
5. All entries must be completed **ONLINE** at www.dancelifeunite.com.au and paid in full via **PayPal** or credit card.
6. By entering our competition/s you confirm all **Terms, Conditions and other Information has been read and accepted.**
7. **Entry fees are non-refundable;** entries are transferable to another section only if received before the close of entry date. An administration fee of \$35 applies for changes to sections requested AFTER Final Programs have been published. An administration fee of \$35 applies for a request for transfer to another event for any reason.
8. A current 'Working with Children Check' or equivalent must be supplied with all troupe entries by the dance director.
9. Sportsman-like behaviour is always expected. DLU promotes ethical, positive, and respectful industry practices. Therefore, at our events, the following will not be tolerated: poaching, plagiarism (copying of choreography/concept/costuming etc), intimidation or any other unsportsmanlike or derogatory comments or behaviour. Judges, staff, directors, and other studio personnel are to always be respected. Social media positive promotion is welcomed however DLU will not tolerate **NEGATIVE** social media of any kind.
10. Junior or assistant teaching staff may perform in Open Age Troupe sections up until the age of 25yrs. Studio Directors, senior teaching staff, pro-dancers & choreographers (whose main income is drawn from teaching, choreographing, or performing) are **not eligible** to compete in Open Age Troupes, – these troupes must be entered in the 'PRO-AM SERIES' or 'OPEN AGE PRODUCTION' sections. PRO-AM SERIES is for troupes that have any of the following: senior teachers aged 25yrs or over, studio directors, choreographers, other dance professionals or full-time dance students of Cert IV or above included in the troupe.
11. DLU reserves the right to add or delete competition days or move competition location, due to unforeseen circumstances and entries will not be refunded if DLU extends dates.
12. The Judge's decision is final. No correspondence will be entered into. Any person approaching a judge during competition will render themselves or their studio/school disqualified - this includes any online approach prior to the event or during the event.
13. DLU reserves the right to cancel or combine any section where less than six entries are received. The Director may place the competitor in the next higher age group section, combine with closest genre, or refund entry fee. At Finals, in the split age groups of 9yrs, 11yrs, 13yrs & 15yrs for solos, entries will be combined into 10yrs, 12yrs, 14yrs & 16yrs respectively if less than 6 entries are received for the split age categories.
14. If a Judge is unable to perform his or her duties, DLU reserves the right to appoint a substitute without notice.
15. All entries are taken on first come basis; we also reserve the right to refuse any entry at the Director's discretion.
16. All troupe entries must be submitted together to avoid any confusion. Correct category entry is essential - a \$35.00 fee for each change will automatically apply.
17. Incorrect acts in a category may result in a 5-point deduction at judges' discretion.
18. All acts must be done with absolute safety and with age appropriateness and family audience viewing in mind. Acts deemed as unsafe or inappropriate will risk a 5-point deduction.
19. DLU reserves the right to reduce an advertised prize pool where minimum entries have not been met.

General Entry Conditions applicable to Live Events

1. Entrants perform at their own risk. Entrants agree they are of good health and fitness and physically able to participate.
2. A draft schedule will be emailed to each participating studio or soloist 3-4 weeks prior to the event, listing section times and events, giving 7 days for updates.
3. Final programs will be emailed within 2 weeks prior to the event. It is your responsibility to ensure you are aware of your performance schedule and times. Please note, PayPal adds program/admin fee as 'Handling' on your entry order.
4. Teachers, parents, or others are not allowed to coach from side stage except for Minis & Petites (2 helpers allowed). Supervisors/parents must wear relevant wristband when side stage. No congregating side stage by dancers, parents or teachers unless requested by DLU staff. Areas must remain clear until staff have directed entry or exit.
5. DLU and the competition venue are not responsible for any property loss or injury to any persons attending the event and lost property will be left at the venue for your collection.

Age Groups

1. Age of competitors will be taken from **1st January of the competition year.**
2. Age limits are **NOT** based on the average age of a troupe - it is based on the oldest troupe member's age as of 1st January of the current year.
3. Solo, Duo/Trio dancers must bring Proof of Age to Finals and Troupe's oldest member must also provide Proof of Age at Finals where random checks will occur.
4. Pointe work may only be performed in sections from 12 years.
5. We reserve the right to confirm age rules have been complied with to ensure fairness to all competitors in the spirit of ethical competition.

Time Limits - all Events

1. Small & Regular Troupes have a time limit of 4 minutes for all Ages. Production Troupes have a time limit of 5 minutes for all Ages.
2. Infants, Primary & High School dance groups have a 4-minute time limit.
3. Solos, Duo/Trios: 6/U & 8/U, 10&U, 12&U have a time limit of 2.5 mins; for ages 13&O all Solo, Duo/Trio acts have a time limit of 3 mins.
4. A deduction of up to 5-points applies to acts that run overtime i.e., 20secs over = 1point; 30secs over = 2points; 40secs over=3points; 50secs over = 4 points; 60secs over = 5 points.
5. No correspondence will be entered into for any act that has points deducted for overtime or for any other reason. Please check music and routine length from first to last movement.

Performances at Live Events (including National Finals)

1. House curtains are not drawn between items and stage lights are not dimmed. Please rehearse stage entrances and exits accordingly. A 30 second time limit applies.
2. There is limited crossover backstage at selected venues. For safety, choreography should limit or omit backstage crossovers.
3. 5 Points will be deducted if competitors do not perform in scheduled sequence except where DLU management deem it necessary in advance for well-being of performers. For scheduling queries please contact us **6 weeks prior to event.**
4. You must be ready to perform at least **3 acts** before yours unless you have permission from Directors prior to event day.
5. All routines and costumes must be appropriate for family viewing. 5 Points deducted if inappropriate at judges' discretion.
6. Competitors are responsible for preparing and removing all props in a timely manner. A 30 second time limit applies. Prop assistants must not wear any studio-identifying clothing when on stage. Please minimise use of large props wherever possible.
7. Simple handheld props are allowed but no props that need assembly on site including scenery are permitted without prior written approval from a Dancelife Director. A 5-point deduction applies for overtime set-ups or dismantling of large props. Side stage assembly/disassembly must be undertaken with permission & coordination of stage manager.
8. **No wet body paint may be used.** Dry body paint is allowed so long as no paint is left on stage after performance. No glitter, powder or other agents that may take excess cleaning-up or potentially damage or impede the costuming or performance of any other competitor. Please discuss any issues that may be in question at least one week prior to the scheduled event.
9. Any discrepancy in scores must be brought to the attention of DLU Staff on the day of competition. No protest will be accepted after this. **Only Studio Directors** or one authorised representative will be permitted to approach our Staff with a problem relating to a troupe or individual in their care. For soloists a parent may approach in absence of Studio Director.
10. Any major dispute requiring investigation must be accompanied with a \$50 non-refundable fee regardless of the outcome.

Performances - Online Heats

1. Soloists may enter as many categories within their age group as desired but **only once per genre** category per heat.
2. Duo & Trio competitors may enter more than once in relevant age category for Heats but must choose their best (i.e., ONE) act for Finals to compete with any given partner/s. Duos & Trios can only enter once with the same partner/s for Finals. For example: Dancer A&B can dance against Dancer A&C.

Submitting Your Music for Live Events (including National Finals)

1. Music must be submitted via digital upload to www.musicuploads.com.au in **MP3 FORMAT** upon request prior to each event. Backup must be provided on USB or other media. Please ensure music is named correctly prior to upload and details provided for starting on/off, name of demi-character or if singing in song & dance. PLEASE CHECK your audio tracks prior to upload & competition day to ensure your dancers have a fair and equitable opportunity to perform at their best.
2. A 5-point deduction or \$35 late fee may apply to late submission of music unless prior authority has been granted by the Directors. Any request to change music on the day of competition will be denied unless accompanied by an additional \$35 fee (on top of the \$35 late fee).

Dressing Rooms at Live Events (including National Finals)

1. Dressing Room facilities are adequate and will be allocated by DLU staff based on total number of performers listed on your entry. Entrants are requested to come as pre-prepared as possible, with make-up completed as for Regional Live Events.
2. All 'chaperones' in dressing rooms responsible for children other than their own must hold a current Working with Children Check or their state equivalent. Adult chaperones must be mindful of dancers' privacy and vacate if/when deemed necessary or requested by staff, especially when spaces are shared.
3. Dressing rooms are for **dressing only**. No teachers, parents or additional students are to congregate in these areas. Please dress and exit quickly to allow others to use dressing space.
4. Dressing rooms are NOT to be used as holding areas for bags or costumes at times when performers are not currently competing.
5. No food or drink other than water allowed in dressing rooms. Any studio or student that abuses dressing rooms will be disqualified. A cleaning fee of \$200 minimum will be charged to any studio leaving dressing rooms/areas untidy.



TERMS & CONDITIONS (continued):

Awards at Regional Live Events

1. At Regional competitions, Troupes win 'DLU DOLLARS', Cash and Sponsored prizes together with place banners.
2. Major Awards are presented at times indicated in Event Program & a representative must accept or prizes may be awarded to the next eligible contestant/s.
3. The total prize pool for each Regional is between \$5,000 and \$10,000 worth of Cash, Vouchers and Prizes depending upon entries.
4. Audio critiques can be accessed via the Music Uploads account after each session and score cards collected from Registration for Soloists but are handed out in Studio envelopes for all troupes on stage at Award Ceremonies indicated in event programs. Score cards can only be collected by the studio director/teacher or authorised delegate. We do not post out awards or score sheets after the event so please ensure you collect your items at the event. If you need to leave early, please alert DLU staff to receive relevant prizes/awards/score cards.
5. Cash Prizes are delivered to your bank account. Please provide banking details to deposit prizes as requested within 7 days of competition to entries@dancelifeunite.com.au.
6. Ribbons are generally supplied to all placing troupe members for troupes of 12yrs & U only for Live Regionals. Ribbons can also be supplied if required for troupes of older age groups at the event only.

Online Events - Studio Director/Dance Co-ordinator/Parent Guarantees

1. Studio Directors, Dance Coordinators & Parents entering their dancer/s fully accept the process of our Online Competition.
2. Any competitor found to falsify any detail will be disqualified from the Online competition and from entering Finals.

Online Heats - Score Sheets, Awards & Prizes

1. Each competitor receives an Audio Critique via Dropbox link from the relevant judge/s of their section/s.
2. DIGITAL CERTIFICATES are now awarded for 1st, 2nd, 3rd, 4th & HC in CELEBRITY and APPRENTICE solo levels and for TROUPES.
3. If a 'Last Chance Qualifier' is run in a season, there is no feedback or prizes of any kind offered for this heat. It is purely for potential Finals qualification purposes only.

Online Heats - Submitting Video & Photographic Entries

1. All Video entries for dancers must be of good quality and filmed in either a concert or competition setting on stage, OR in studio with white light to be eligible for prizes. Items with theatrical lighting or special EFX including multiple edits or items filmed in a studio setting will be adjudicated for potential qualification only i.e. not a mark or potential prizes.
2. Pre-recorded student vocals are permitted on the backing track for items entered as 'Musical Theatre' or 'Song & Dance' in Troupe Sections (not in Solo or Duo/Trio sections).
3. Pre-recorded tap sounds **will not** be permitted in Tap Dance categories for either TROUPES or SOLOS, DUOS/TRIOS.
4. All entries must be loaded to a **YouTube** channel and the link correctly copied to your entry. The YouTube upload should be set to 'Unlisted' and must remain active until the end of the Finals Competition.
5. All Video recordings must be taken within the 12 months prior to the relevant Heat start date.
6. 'DLU NATIONAL 'FACE OF BLOCH' DANCE-MODEL SEARCH' competition entrants please provide **ONE headshot** and **ONE full-length shot** in JPG format of the entrant (no larger than 500KB each). Entries will **not be accepted** where more photos have been provided than required. No over edits please!
7. All entrants into the Model competition must be dancers and provide information regarding training.
8. Model entrants must NOT be contracted to any other brand **past the date of potential contract for the Finals Title winners**. Winners will be contracted to Dance wear brands & DLU. Any current contract that a competitor may have must be concluded prior to the commencement of the DLU 'DLU NATIONAL 'FACE OF BLOCH' DANCE-MODEL SEARCH' contract.

To Qualify for National Finals

1. All acts scoring 80 points or above from **DLU Live** or Online Events are eligible to compete for major prizes & titles at DLU Finals in TROUPE, SOLO, DUO/TRIO sections. *Acts achieving 79 or less points in Heats may compete in Rising Star sections at Finals OR in our 'APPRENTICE LEVEL' SECTIONS. Unqualified acts can also enter 'Rising Star' sections.* Solo acts in APPRENTICE LEVEL need to achieve 75 points or above to qualify to compete at NATIONAL FINALS in APPRENTICE LEVEL events.
2. All Solo, Duo/Trio acts that have qualified at a 'QUALIFYING EVENT' (run by others i.e. NOT DLU flagship events), with a place in an **OPEN** or **ELITE** category are eligible to enter **CELEBRITY LEVEL** at Nationals. All Solo acts that have qualified at a 'QUALIFYING EVENT' with a place in **SPECIALY RESTRICTED, RESTRICTED** or **NOVICE** category are eligible to enter **APPRENTICE LEVEL** at Nationals.
3. For every 5 qualified troupes, a studio or school may enter one additional un-qualified troupe routine for National Finals. **Where a studio has entered 20 or more troupes at a Live or Online Heat, they may enter an unlimited number of troupes at National Finals.**
4. A studio may change the genre & age group of any qualified routine from Regionals to Finals.
5. **Solo dancers do not have to compete in the same genre at nationals as what they qualified at heats in. Solo dancers who compete in Protégé Championships in Live or Online heats can now do UNLIMITED SOLOS @ National Finals plus National Protégé Championship & Improvisations. Solo dancers who compete with 3 or less routines at heats, can enter any 3 National Finals plus Improvisations and the Rising Star section only. Solo Protege Championships must be entered at regional or online heat level in order to compete in Protégé at National Championships.**
6. Any person or group entering Finals who is found to have not qualified correctly, will forfeit entry fees and be disqualified.

Routine Limits & Miscellaneous at National Finals

1. Qualification for Troupes is required via Live or Online Heats and studios can enter a maximum of **TWO GROUPS PER SECTION** at National Finals.
2. Qualified Duos/Trios contestants can enter **ONE CATEGORY** with the same partner/s at National Finals.
3. Qualified Dancers can enter **ONE AGE CATEGORY** of the DLU NATIONAL 'FACE OF BLOCH' DANCE-MODEL SEARCH competition at National Finals.
4. Qualified Soloists can enter **EACH SECTION ONCE** at National Finals with the exception of RISING STAR which allows 2x entries per competitor. Routines for National Finals sections can be different from those qualified at Heats to allow for updated choreography.
5. Places are limited and will be available on a first-come, first-serve basis in all categories.
6. All competitors **MUST** wear a well fitted wristband on their right wrist at Finals. Loose wristbands will be replaced by staff.
7. Entrants first compete in the DLU National Finals. *Studios entering TROUPE CHAMPIONSHIPS (either MAJOR, MINOR or BOTH LEVELS) must qualify by competing in at least 3x Troupes in the relevant age group, except DIVISION 1 where only 1x Troupe is required to qualify.
8. Soloists wishing to compete for Major Prizes must compete in 3x Final sections at Finals and the 'DLU Finals Protégé Championship' which will also be advertised as 'Australia's TOP National Dancer' Competition at times. Improvisation sections at Finals do not count toward Protege pre-requisite of 3x final routines.
9. Students are advised not to sit in the audience directly preceding their event and to stay with their studio group so staff can locate.

National Finals - Score sheets, Awards & Prizes

1. Major Cash, Mentoring, Workshop Programs, Contracts, Dancewear, Tuition, Gift Vouchers, Trophies, and much more is awarded at National Finals. A breakdown of National prize pool will be advertised in the event program.
2. Audio critiques for all competitors are uploaded after each event day to the MUSIC UPLOADS system and score cards can be collected from the Registration area. Score cards can only be collected by the studio director/teacher for troupes in advance of award ceremonies. A competitor's parent or supervisor must collect for Solo, Duo/Trio performers. We do not post out awards or score cards after the event.
3. DLU National Ribbons will be awarded to each troupe member – of all age groups – for placing 1st, 2nd or 3rd and ribbons for 4th or Highly Commended at National Finals.
4. Winners of cash prizes will be asked to provide banking details for us to deposit major awards after the event. Token giant cheques are awarded at the event.
5. If a soloist wins the Grand Final they will be invited to perform as a Guest Artist in the following year's Grand Final in the 'DANCE OF CHAMPS' segment. Solo National Grand Champion winners can compete in the Finals of the following year however may only compete in the Grand Final if their age puts them into the higher age group than the category that was won the year previously. E.g. a competitor may win the 'Junior (9-10yrs)' category this year so they are not eligible to compete in Grand Final in Junior the following year, HOWEVER if their age puts them into the 'Pre-Teen (11-12yrs)' category the following year, they may compete at both Finals & Grand Final.

The following Codes of Conduct are applicable to all ANDCA competitions. Participants in any of the above competitions are bound by ANDCA Codes of Conduct in addition to each competition's own Terms & Conditions. Failure to observe ANDCA Codes of Conduct may result in disqualification and/or future ban from any or all ANDCA competitions.

Dressing Room Codes

- Stage 1 will be a common area where NO costume changing, or undressing will take place. At no point are any photos or video to be taken inside a change room.
- Stage 2 will be a partitioned or closed off area where ALL undressing and costume changing will take place. At no point are any photos or video to be taken inside a change room.

Anti-bullying Code:

- We are firmly Bully Free and reward acts of kindness at our events. Please be considerate around others and support ALL competitors and Studios for the duration of the event. Any evidence of bullying from anyone at the event will be dealt with accordingly and may result in instant disqualification.

Social Media Code:

- Positive social media promotion is welcomed using official tags and relevant links. However posts on any social media forum that are considered to be damaging in any way by Directors toward any person involved in our events will not be tolerated and will result in disqualification and/or a permanent ban from future competition among all ANDCA competitions. This includes posts prior, during or post event/s which may in any way: 1) intimidate, bully, harass or discourage another person from participating in our events; 2) which may damage valuable sponsorship arrangements; or, 3) which may cast doubt upon the integrity, professionalism and/or reputation of this competition and it's Director/s.
Remember Social Media can be fun but must be used in a responsible way!

DanceLife Unite are dedicated to creating positive, inspiring opportunities in a supportive environment for ALL DANCERS, EVERYWHERE!



TEACHER WRISTBAND ALLOCATION @ HEATS & NATIONALS

TROUPE HEATS & NATIONAL FINALS - audience entry		
	Director's FREE Wristband	Teacher/Chaperone's FREE Wristband
1-5 Troupes entered	1	2
6-20 Troupes entered	2	3
21+ Troupes entered	3	4
NATIONAL GRAND FINAL		
	Director's FREE Wristband	Teacher/Chaperone's FREE Wristband
	<i>(This pass allows audience OR backstage access)</i>	<i>(This pass allows BACKSTAGE ACCESS ONLY)</i>
1-5 Troupes in Grand Final	1x FREE WRISTBAND PER TROUPE IN GRAND FINAL	To be determined by troupe/s size & age*

**Any requests for wristbands above what is allocated in the above table will be denied. Please purchase additional spectator wristbands if you require more than the above totals per session/day.*

** All 'chaperones' in dressing rooms responsible for children other than their own must hold a current Working With Children Check or their state equivalent. NB: We will need to know if Directors will be backstage or intend to watch in the audience to prepare VIP seating for you at National Grand Finals!*

CONTACT INFORMATION:

GENERAL ENQUIRIES: info@dancelifeunite.com.au

ENQUIRY AFTER ENTERING AN EVENT: entries@dancelifeunite.com.au

WEBSITE: www.dancelifeunite.com.au